

MASTERCLASS ON REGULATION

DEBAUVE GUILLAUME

LSFI Summit – 17/09/2025



BNP PARIBAS

LEGAL

The bank for a changing world





- Identification of regulatory developments, trends and risks
- Alert of relevant stakeholders
- Provide legal analysis.

REGULATORY WATCH



- Coordination of internal working groups within LEGAL
- Participation in industry association working groups

COORDINATION & ADVOCACY



- Identification of regulatory changes triggering a need for taskforces
- Contribution to the set-up of any Group governance and taskforce

REGULATORY PROJECTS



- Provide legal interpretation and advice on a cross-entity and cross-border basis
- Implementation of communication, training and awareness materials

ADVISORY & TRAINING



- Ensure consistency of legal approaches when dealing with supervisors requests
- Be the point of contact for exchanges with supervisor authorities

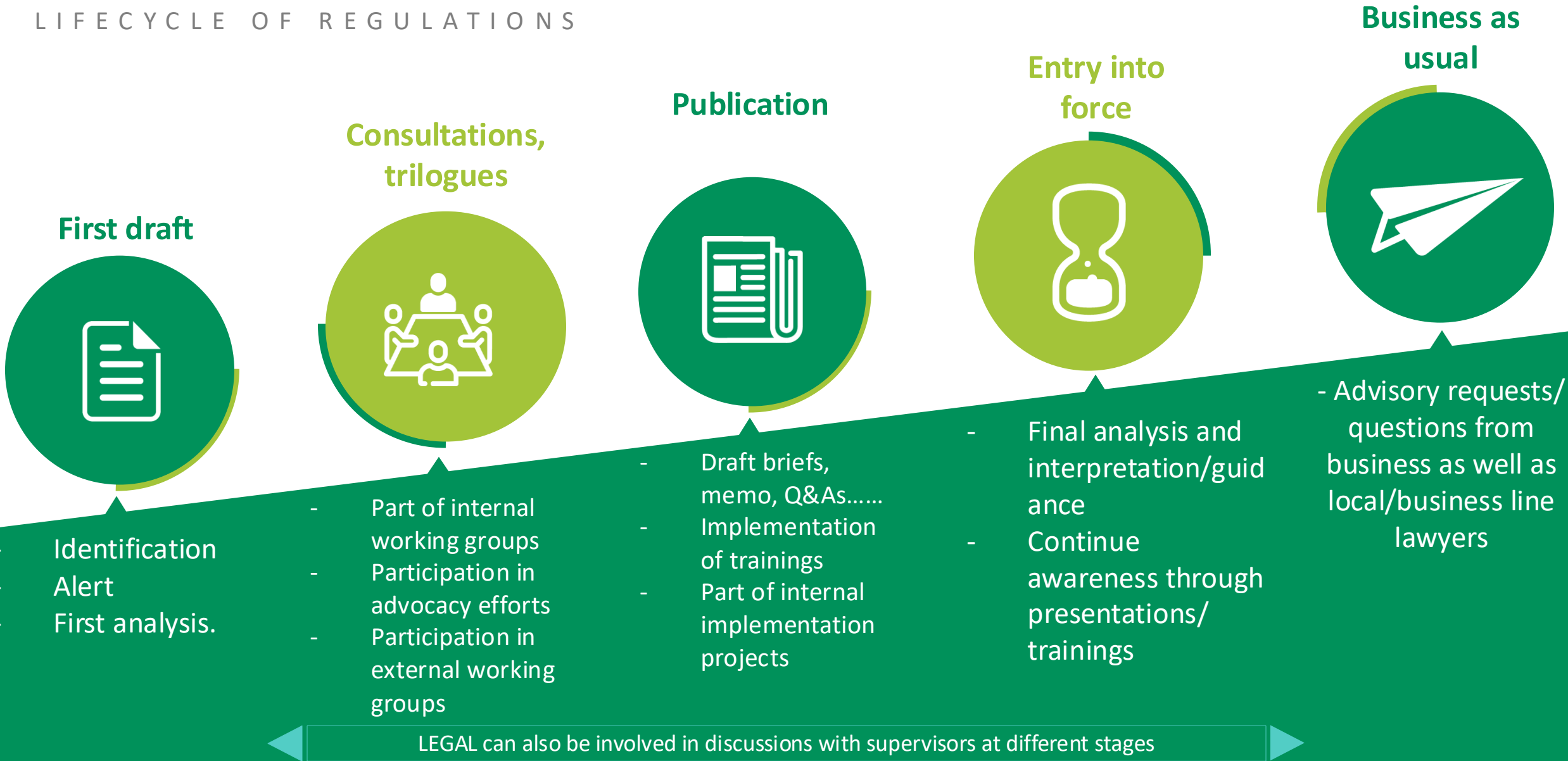
RELATIONSHIP W/ REGULATORS

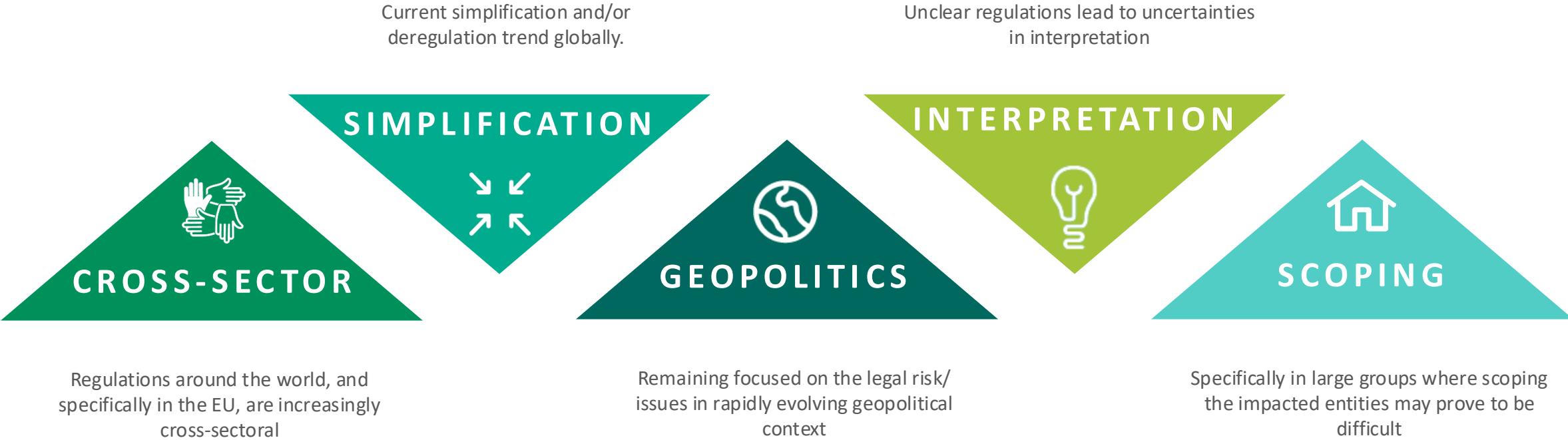


FLOW OF INTERVENTION

LEGAL

LIFECYCLE OF REGULATIONS





USE CASE 1 – ESG RATING REGULATION

LEGAL

CHALLENGES

✓ Scoping

Application to the Group? To which entity and geographical area?

✓ Cross-sectoral

What are the activities covered?

✓ Interpretation

What was meant with this text? How to understand misleading points?

✓ Geopolitics

Several ESG ratings and/or data regulatory texts are popping up at the same time globally. Therefore, a risk linked to interoperability between regulations



INTERNAL SOLUTIONS

✓ Regulatory taskforce

Cross-businesses, cross-border

✓ Regulatory guidelines

Available to the whole Group, including internal interpretation. Continual building of use cases

✓ Awareness

Trainings, presentations, face-to-face with businesses



BNP PARIBAS

The bank for a changing world

USE CASE 2 – GREENWASHING

LEGAL

CHALLENGES

✓ Scoping

Application to the Group? To which entity and geographical area? Only EU?

✓ Cross-sectoral

What are the activities covered? Only regulated activities?

✓ Interpretation

What are the applicable texts? What are supervisors' views?

✓ Geopolitics

Several litigation cases around the world and texts are appearing



INTERNAL SOLUTIONS

✓ Greenwashing guidelines

Guidelines on marketing and communication materials applicable to the whole Group and guidelines on terms to be used

✓ Greenwashing taskforce

Implemented together with RISK and COMPLIANCE to identify existing procedures, process, governance and determine gaps and actions

✓ Awareness

Trainings, presentations, face-to-face with businesses



BNP PARIBAS

The bank for a changing world

LEGAL

THANK
YOU



BNP PARIBAS

The bank for a changing world