



Impact Unlocked: the LSFI Impact Investing Advisory Board (IIAB)



 Find out more
about the IIAB:



 Get in touch at
iiab@lsfi.lu:





Agenda

- About the Luxembourg Sustainable Finance Initiative (LSFI)
- About the LSFI Impact Investing Advisory Board (IIAB)
- About the IIAB members & workstreams





About the LSFI

About Us – LSFI 2025 - 2030



**Public-private
partnership,**
founded in 2020



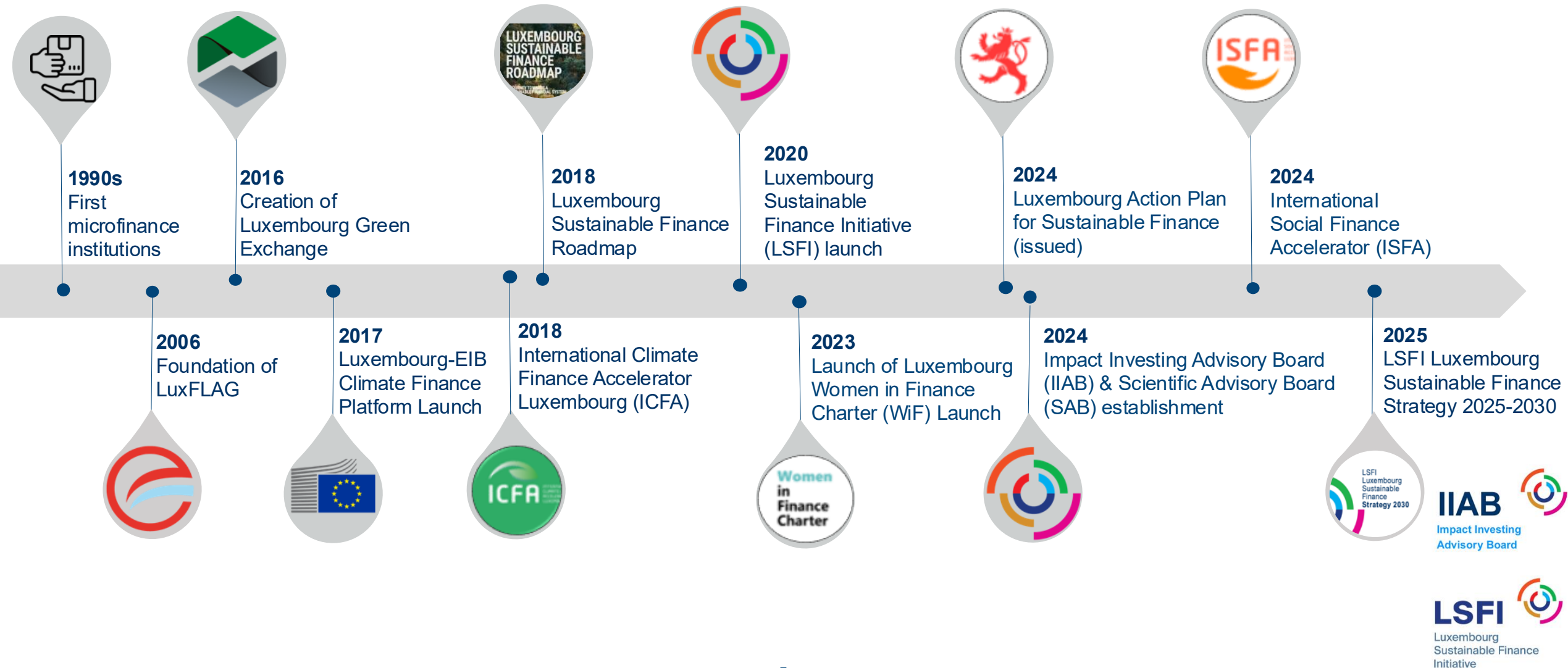
**Luxembourg's
coordinating entity on
sustainable finance**



**Centre of Excellence
and
Knowledge Hub**



Luxembourg's sustainable finance journey





Luxembourg Action Plan for Sustainable Finance



THE GOVERNMENT
OF THE GRAND DUCHY OF LUXEMBOURG
Ministry of Finance

The Ministry of Finance's 10 Point Action Plan for Sustainable Finance



Develop innovative solutions for global impact

Expand on Luxembourg's blended finance activities and long-standing expertise in impact investment. Continue to explore innovative solutions to help accelerate the financing of the Sustainable Development Goals, including via de-risking mechanisms and technical assistance.



Strengthen global connectivity in sustainable finance

Connect global thought leaders in sustainable finance by developing strategic partnerships with other countries, financial hubs, and international organisations.



Amplify Luxembourg's role as a sustainable finance hub

Further strengthen Luxembourg's standing as a leading sustainable finance hub, mainstream sustainable finance, and continuously improve and expand the toolbox of products and services designed for sustainable investments. Support efforts to bring together the sustainable finance ecosystem in Luxembourg, fostering innovation, community growth, and attraction of entities to Luxembourg.



Become a center of excellence in gender finance

Drive structural change in finance for women and women in finance. Continue to champion the Women in Finance Charter, attracting more signatories, and working towards achieving greater gender equality at decision making positions in the financial sector.

Deliver actionable outcomes through the Gender Finance Task Force and its 7 working groups, to provide solutions both for increased representation of women in the financial sector, as well as innovating gender finance products and services. Aim to become a hub for gender lens investing.



Support initiatives to develop the talents of tomorrow

Develop specialized sustainable finance education programs to raise the next generation of leaders in Luxembourg, by attracting bright minds and nurture existing talent towards sustainability.

Continue and expand on the Chair in Sustainable Finance with the University of Luxembourg, making sure that the talent needs of the financial centre are addressed.



Leverage finance to transition to net-zero

While Luxembourg is recognized as a hub for green finance, achieving net zero will also require significant investments to support today's companies in transitioning to the net-zero economy of tomorrow. Build on Luxembourg's role as a global hub for mobilizing capital and work with industry partners to identify opportunities and develop solutions in transition finance.



Go beyond green

Building on Luxembourg's existing strengths in climate investments, support finance in going beyond green to accelerate the social and governance dimensions of ESG, by leveraging partnerships, innovative products, and standards. Position Luxembourg in new areas such as biodiversity and natural capital finance.



Mobilize private capital for sustainability

Leverage Luxembourg's position as an international financial centre to help direct financial flows towards achieving the Paris Agreement and the Sustainable Development Goals by working with the private sector. The Ministry of Finance will actively seek partnerships in order to mobilize private capital. Expand partnerships within the SDG Impact Finance Initiative in order to scale catalytic capital.



Drive the digitalisation of sustainable finance

Leverage Fintech and digital solutions to enhance and improve the impact and efficiency of sustainable finance in Luxembourg and beyond.

Collaborate with stakeholders such as the LHoFT and the University to catalyze Fintech in sustainable finance.



Strengthen the Luxembourg Sustainable Finance Initiative

Enhance the LSFI's capabilities to accompany the finance industry transition towards sustainability, focusing on awareness-raising, data and implementation of international frameworks.

www.mfin.gouvernement.lu



LSFI Governance





About the LSFI Impact Investing Advisory Board (IIAB)

Find out more
about the IIAB:



Get in touch:





The IIAB Mission

Guide the LSFI in formulating and executing a roadmap to further boost impact investing in Luxembourg

- Bring together experts and committed professionals in impact investing to strengthen the LSFI's efforts and support Luxembourg's leadership position in this space.
- Act as a platform for thematic knowledge sharing.
- Bolster the development of the impact investing ecosystem.
- Help remove barriers associated with a lack of information and data sharing on market activities, performance, and practices.



GSG Impact & Luxembourg National Partner

In December 2024, the LSFI, under the guidance of the IIAB, has been appointed **Luxembourg's National Partner** of the **Global Steering Group for Impact Investment (GSG Impact)**.

- GSG Impact unites National and Strategic Partners worldwide, **fostering collaboration to develop innovative financial solutions and policies** to address pressing global challenges.
- As Luxembourg's NP, the LSFI and the IIAB will **work closely with leaders from business, finance, government, and the nonprofit sector** to build a robust impact ecosystem in Luxembourg and beyond.





ACCESS THE GSG IMPACT
NETWORK

About the IAB's members & workstreams

Find out more
about the IAB:



Get in touch:





The IIAB Members



Guillaume Bonnel

Impact Portfolio Strategy
Advisor



Gunter Fischer

Principal Advisor -
European Investment Bank



Laura Foschi

Executive Director - ADA asbl



Arnaud Gillin

Partner – INNPACT



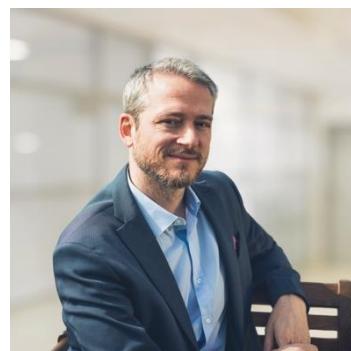
Hedda Pahlson-Moller

Co-founder and CEO - Tiime



Francois Passant

Global Head of Products
& Solutions – Nordea AM



Stephan Peters

CEO - Accelerating Impact



Kaspar Wansleben

Director Finance &
Operations – Camco



IIAB Workstreams: what we focus on

- **Education & Advocacy** → Develop training resources and advocacy initiatives to educate stakeholders and promote best practices in impact investing.
- **Market Mapping** → Map the Luxembourg impact investment ecosystem, identifying key stakeholders to foster engagement and financial instrument development.
- **Market Sizing & Data** → Assess Luxembourg's impact investing market size, to identify barriers and attract more capital.
- **Narrative & Definition** → Define impact investing in Luxembourg, aligning with European and global perspectives to attract more impact capital.
- **Regulation & Tools** → Engage regulators and financial market participants to shape clear, practical frameworks supporting impact investing in Luxembourg.
- **Representation & Visibility** → Enhance IIAB's global presence through key events, communications, and networking to promote Luxembourg as an impact investing hub.



IIAB Workstreams: what we have achieved so far (April 2024 to April 2026)

Education & Advocacy:

Mapping of existing trainings

Market Mapping:

Mapping of the Luxembourg Inclusive and Impact Finance Ecosystem

Market Sizing & Data:

Data paper ; Market sizing with impact Europe

Narrative & Definition:

Impact Investing Definition published

Regulation & Tools:

Event “Mobilising Capital for Impact: Tackling Liquidity Constraints in Emerging Market Investments”; SFDR 2.0 feedback submitted; 90/10

Representation & Visibility:

LSFI Events calendar integrating Impact Investing; IIAB Deck; IIAB Launch Event “Impact Unlocked: Exploring the LSFI Impact Investing Advisory Board”, 13 June 2025 & Summit Master Class 18 September 2025



Impact Investing Definition

Find out more
about the IAB:



Get in touch:





Impact Investing Definition in the Luxembourg context

Impact Investing **involves:**

- **Investments made with an intention** to contribute to solving social and/or environmental problems alongside a financial return
- **Measuring and managing** positive and negative impact
- Leveraging **financial markets infrastructure**
- **Financing companies or projects** that aim to provide solutions to address social or environmental challenges



Mapping the Luxembourg Impact Investing Ecosystem

- **LSFI** and **InFiNe** collaborate to map the Luxembourg inclusive and impact finance ecosystem.
- The project consists of 3 key steps:
 - **Survey + interviews:** A survey was launched to nearly 90 organisations in Luxembourg. Following the survey, selected interviews are being conducted to collect additional insights from selected players.
 - **Public report:** Published on the LSFI website, the report will present an overview of Luxembourg's impact investing ecosystem, including key players and sectors, as well as areas of strengths and opportunities for improvement.
 - **Digital Platform:** The mapped organisations will be displayed on a digital platform, highlighting inclusive and impact finance players in Luxembourg.





The IIAB Call for Action

«Invite and engage with the Luxembourg financial sector with the aim of inspiring, guiding, influencing and mobilising it for Impact Investing that contributes to the wellbeing of people and the planet.»



iiab@lsfi.lu



IIAB
Impact Investing
Advisory Board

LSFI
Luxembourg
Sustainable Finance
Initiative

Thank you for your attention.

 Find out more
about the IIAB:



 Get in touch at
iiab@lsfi.lu:



FOLLOW US



LSFI

Luxembourg
Sustainable Finance
Initiative

